

ISSUE #5

The Bear

GLOBAL EDITION



THE BEAR

A publication of Maple Bear Global Schools Ltd.



EDITOR

Pia Kar

ASSISTANT EDITOR

Romina Mendez

ASSOCIATE EDITOR

Martine Lewis

ART DIRECTOR

Renato Calderaro

CONTACT / INQUIRIES

Maple Bear Global Schools
Corporate Head Office
1003 - 40 University Avenue
Toronto, ON
M5J 1T1
Canada

www.maplebear.ca

info@maplebear.ca

ISSUE #5

2025

Contents

Education as our Constant: A Note from our CEO	3
Students First: A Note from our CAO	4
A Global Journey of Growth	5
Where Learning Begins	6
Ready to Soar! An Interview about Elementary Readiness	8
Connected Classrooms, Global Citizens	10
Expanding Opportunities for our High School Students	12
Inside Maple Bear's Evolving Curriculum	14
Quality that Builds Strong Schools and Bright Futures	16
From First Steps to Future Paths	18
The Maple Bear Difference: A Global Franchise Opportunity	20
Empowering Educators Everywhere	22
Summer Camp in Canada	23



About Maple Bear

Maple Bear Global Schools brings the best of Canadian bilingual education to the world. Founded in Vancouver in 2004, we combine Canadian pedagogy with a global mindset to nurture confident, curious, and resilient learners. With more than 450 schools worldwide, Maple Bear delivers a rigorous academic program rooted in Canadian principles and enriched by local culture and language.



The best of Canadian education for a global future.



Education as Our Constant: A Note from the CEO

At Maple Bear Global Schools, we recognize that the world is changing faster than ever. Economic shifts, technological advances, and global challenges can make the future feel uncertain. Yet there is one constant we can always count on: the power of education.

Education gives every child the skills, confidence, and resilience to thrive, even in uncertain times. This truth is at the heart of Maple Bear's growth.

Families around the world continue to choose Maple Bear because they see in us not just a school, but a promise: high-quality, bilingual Canadian education that prepares students for life in their own communities and as global citizens.

With every school we open, we deepen our global community and broaden opportunities for children everywhere. Today, more than 69,000 students in over 35 countries are part of the Maple Bear family, living proof that the demand for excellent education transcends borders and cultures. Each addition to our network strengthens our ability to connect families, inspire students, and shape the next generation of global citizens.

The future may bring challenges we cannot yet predict, but Maple Bear's dedication remains steadfast.

Education is the constant that empowers children, strengthens families, and builds communities that endure. And we will continue to grow, guided by the belief that placing children at the centre is the most powerful investment we can make, because every student carries within them the potential to shape a brighter tomorrow.

I hope you will find that this edition of our global magazine showcases the many ways Maple Bear continues to expand its reach and uphold its promise of quality education worldwide.

Together in education,

A handwritten signature in black ink, appearing to read 'J. Melo'.

José Henrique Melo
Chief Executive Officer
Maple Bear Global Schools

Students First: A Note from the CAO

At Maple Bear Global Schools, we believe education is more than classroom learning — it is about shaping confident, curious, and compassionate global citizens. Our academic team is dedicated to ensuring that every child in every Maple Bear school experiences learning that is consistent, innovative, and rooted in the best of Canadian methodology. As we celebrate milestones and prepare for the future, our commitment to quality remains at the heart of everything we do.

For more than 20 years, the Maple Bear Quality Assurance (MBQA) framework has guided how we uphold high standards of teaching and learning across our schools. In 2025, we introduced the Global Excellence (GLEX) Program, a new framework designed to ensure the same level of rigour in school operations, facilities, and administration.

Together, they reinforce our promise: every Maple Bear student, anywhere in the world, receives an exceptional education.

We are equally proud of the ways our programs extend beyond the classroom.

MyMapleBear resources and Global Connections projects carry the Maple Bear experience across ages and borders. Our summer camps and high school pathways open doors to international opportunities while we stay true to our Canadian roots.

Looking ahead, our guiding principle remains simple: to put students first. When children have a strong foundation, when teachers are supported, and when schools are anchored in quality, the results are transformative. As you read through this edition, you'll see how our focus on quality and innovation creates meaningful opportunities for students in every corner of our global network.

Warm regards,



Martine Lewis,
Chief Academic Officer
Maple Bear Global Schools



A GLOBAL JOURNEY OF GROWTH

What started as a bold idea in 2004 has grown into a global movement in education. Today, Maple Bear schools can be found in over 35 countries worldwide, serving more than 69,000 students and families. Our growth reflects the values that set Maple Bear apart. Parents choose us because they want a high-quality Canadian education combined with local context and the lifelong gift of bilingualism. Teachers and trainers are drawn to a model rooted in inquiry, curiosity, and the joy of learning, supported by world-class training and ongoing professional development. School owners invest in Maple Bear because it is more than a business model; it is a sustainable pathway to community impact and global connection.

Together, these elements have created a vibrant learning community where children discover themselves and the world around them.

Every Maple Bear classroom—whether in Asia, Europe, the Americas, or beyond — is alive with possibility. Different cultures, different languages, one shared experience: a Canadian approach to education that prepares children to thrive in a rapidly changing world.



Each school is more than a building — it's a hub of opportunity. They bring global best practices to local contexts, create jobs, empower teachers, and most importantly, give children the confidence to dream bigger. The ripple effect in families and communities is immeasurable.

Martine Lewis, Chief Academic Officer

The Road to 500

500 schools. Countless futures.

Our ambition is to continue expanding into regions where Maple Bear is not yet present, bringing our educational model to places where parents are eager for bilingual, high-quality learning opportunities. By doing so, we extend access to the best of Canadian teaching practices and provide students with the foundation to thrive in school and beyond.

Looking ahead, Maple Bear is preparing to celebrate an extraordinary milestone in 2026: **500 schools worldwide.**

Each new school is a place where children discover curiosity, confidence, and joy — preparing them for futures without borders.



WHERE LEARNING BEGINS

A journey through the Maple Bear Early Learning Years

The morning sun streams through the windows of Maple Bear Foz in Portugal as fourteen-month-old Sofia takes her wobbly first steps into the Bear Care classroom. Her tiny fingers grip the edge of a low exploration table, eyes wide as she studies the colourful sensory materials arranged just for her. What she doesn't know yet is that she's beginning a remarkable educational journey rooted in the best of Canadian early childhood pedagogy — one that will nurture her curiosity and set the foundation for lifelong learning.

For Sofia's parents, enrolling her at Maple Bear marks the start of a learning journey that will carry her from the tender early days of Bear Care to the curiosity-filled years of preschool, and onward to a future built on the Canadian approach to education: play-based, inquiry-driven, bilingual, and grounded in the belief that children learn best when they feel safe, loved and challenged.



Bear Care: A Gentle Start with Big Impact

Bear Care is Maple Bear's infant and toddler program, designed for children from 6 weeks to 2 years old. While it may look like simple play, every moment is carefully planned to nurture social, emotional, physical, and cognitive growth.

In Foz, Sofia's days are filled with music, movement, finger painting, and quiet storytime. Teachers greet her in both English and her home language, sing songs that encourage speech development, and provide sensory experiences that stimulate her curiosity.

What Sofia experiences is mirrored in classrooms worldwide — in India's Maple Bear Indirapuram, toddlers explore “texture

stations” filled with fabrics, sand, and water, discovering through their senses while supporting brain development.

The Canadian approach prioritizes secure and positive relationships between caregivers and children. Consistent routines, warm interactions, and gentle transitions help babies and toddlers feel safe — the essential foundation for future learning. Bilingual exposure begins naturally through songs, stories, and conversation. By age three, Sofia understands simple instructions in two languages, can express her needs clearly, and has the confidence to try new things.



Preschool: Where Curiosity Takes the Lead

Building on the secure relationships and early skills developed in Bear Care, Sofia enters preschool already familiar with the routines, teachers, and joy of learning through play. This strong foundation allows her to take on new challenges while expanding her horizons through richer, more complex learning experiences that spark curiosity and independence.

Sofia's class plants herbs for a cooking project — counting seeds, labelling plants, and observing how sunlight affects growth. Similar projects happen globally: in São Paulo, Brazil, preschoolers plant gardens, exploring mathematics, literacy, and science inquiry simultaneously. The details may vary, but the hallmarks remain constant — hands-on, collaborative, and deeply engaging learning that reflects the Canadian approach.

Preschool deepens bilingual learning with instruction continuing in both languages. This strengthens communication skills while developing cognitive flexibility and cultural awareness. Sofia, now a confident communicator, switches easily between languages — sometimes asking questions in one and explaining ideas in the other.

Today, Sofia greets new classmates with a smile, shows them how to tend the garden, listens carefully during stories, and contributes her own ideas — a clear reflection of the confidence and curiosity she's developed in preschool.

“When we nurture curiosity from the very first day, we set the stage for a lifetime of joyful learning.”

Martine Lewis,
Chief Academic Officer



From First Steps to School Success

By the time children leave preschool, they're not only ready for kindergarten — they're eager for it. They have the confidence to speak up, the curiosity to keep exploring, and the skills to work well with others.

For Sofia, the journey from Bear Care to preschool has been more than a change in age and ability — it has laid the foundation for a lifetime of learning built on play, connection, and discovery. Each day, she enters the classroom ready to explore, contribute, and grow.

At Maple Bear, the first steps into education should be joyful ones. Whether your child is taking their first wobbly steps in Bear Care or confidently running into preschool, they are beginning a journey shaped by care, curiosity, and the Canadian commitment to quality education.

Because big dreams start small — and we're here for every step.

The Canadian Advantage, Anywhere in the World

Maple Bear schools deliver a globally respected Canadian curriculum adapted to local contexts, ensuring children receive education that balances academic excellence with emotional well-being. From Dubai to Nairobi, from Guatemala City to Seoul, the same principles apply:

- **Play is the primary vehicle for learning** in early childhood.
- **Bilingual immersion** to develop communication skills and cultural competence.
- **Inquiry-based learning** that encourages curiosity, critical thinking, and problem-solving.
- **A focus on the whole child** — nurturing emotional resilience, empathy, and creativity alongside academic skills.
- **An emphasis on global citizenship** helps children appreciate diversity, respect others, and understand their role in a connected world.

In Nairobi, Kenya, preschoolers run a “pretend grocery store” to learn about money, healthy eating, and community roles. In Guatemala City, building block towers spark conversations about balance and cause-and-effect. In Seoul, daily circle time includes greetings and songs in both English and Korean, fostering connection and belonging.

READY TO SOAR!

An Interview with Justine O'Grady on Elementary Readiness



“Is my child really ready for elementary school?” — It’s the question on every parent’s mind as their preschooler approaches this exciting milestone.

We sat down with Justine O’Grady, Maple Bear’s Director of Curriculum, to get expert insights on navigating this important transition and how Maple Bear’s approach sets children up for success from the very start.

Q: Parents often worry their child isn’t “ready enough” for elementary school. How do you define readiness?

A: Readiness is about more than knowing letters and numbers — it’s about nurturing the whole child. Social-emotional skills, such as sharing and managing emotions, communication skills, like expressing ideas, and self-help skills that build independence, are all key. At Maple Bear, our preschool program develops these foundations step by step through play, inquiry, and exploration. By the time children enter elementary, they don’t just “know” things — they feel confident and capable, ready to thrive in both learning and relationships.

Q: How does Maple Bear’s approach prepare children differently from traditional preschools?

A: Our Canadian approach focuses on building children’s confidence and identity as learners. We nurture curiosity, creativity, and problem-solving through inquiry and play. Children are encouraged to ask questions, test ideas, and reflect, helping them see themselves as active participants in learning.

Through meaningful, hands-on explorations, children learn to think critically, work collaboratively, and approach challenges with confidence. These foundations ensure they don’t just enter elementary “ready” — they step forward as capable, resilient learners prepared for life.

Q: Should parents worry if their child isn’t reading yet?

A: Not at all — reading readiness looks different for every child. Early literacy is not a single milestone but a progression of skills and understandings that unfold at different times for different learners. Some children may be able to sound out words early but lack comprehension of what those words mean. Others may deeply understand complex stories, themes, or characters, but are not yet ready to connect letters with sounds. Both are valid pathways in the journey toward becoming readers.

At Maple Bear, readiness grows from language-rich experiences. Through storytelling, dramatic play, songs, and conversations, children expand vocabulary, build

comprehension, and develop a love of language that underpins strong reading.

Q: Which social skills help children thrive in elementary school?

A: One important social skill is the ability of children to vocalize concerns. Children who can ask for help when they’re confused, who can share their ideas, or who can express their needs clearly feel more confident and engaged in the classroom. Equally important is the development of cooperation skills — being able to share materials, take turns, and work together on group tasks. Another cornerstone is emotional regulation: the ability for children to manage disappointment and keep trying after mistakes. Together, these skills help children form positive relationships with teachers and peers, build resilience, and create a sense of happiness at school that supports their academic growth.

Q: How does learning two languages help children prepare for elementary school?

A: Bilingualism is a foundation for strong learning skills. Children who use more than one language strengthen focus, memory, and adaptability. These skills support problem-solving, help them see challenges from different perspectives, and make it easier to adjust to new situations. In the classroom, this flexibility builds confidence and sets the stage for long-term success.

Q: How can parents help their child get ready for elementary school?

A: Encourage independence in everyday routines. Let children pack their backpack,

choose clothes, or solve small problems—these moments build confidence and responsibility.

Reading together daily is also powerful. Share stories, talk about pictures, and enjoy the time. This builds vocabulary, imagination, and a love of learning.

Most importantly, trust your child's unique pace of development. It's natural for children to grow in different ways and at various times. By celebrating your child's progress, you're helping them step into school

with confidence, curiosity, and a positive attitude toward learning.

Q: Do you have any final thoughts for parents who are feeling worried?

A: Starting elementary school is a big milestone, and it's normal for children and parents to feel anxious. What matters most is not whether a child can already read or add, but whether they feel safe, supported, and excited about learning. Academic skills will come

in time, but a child who feels secure and curious is already on the right path.

At Maple Bear, we put these qualities at the centre of everything we do. Through caring relationships, play, and rich language experiences, children build confidence and resilience. When parents and teachers work together to nurture belonging and joy, children don't just adjust to school—they flourish, developing a lifelong love of learning.

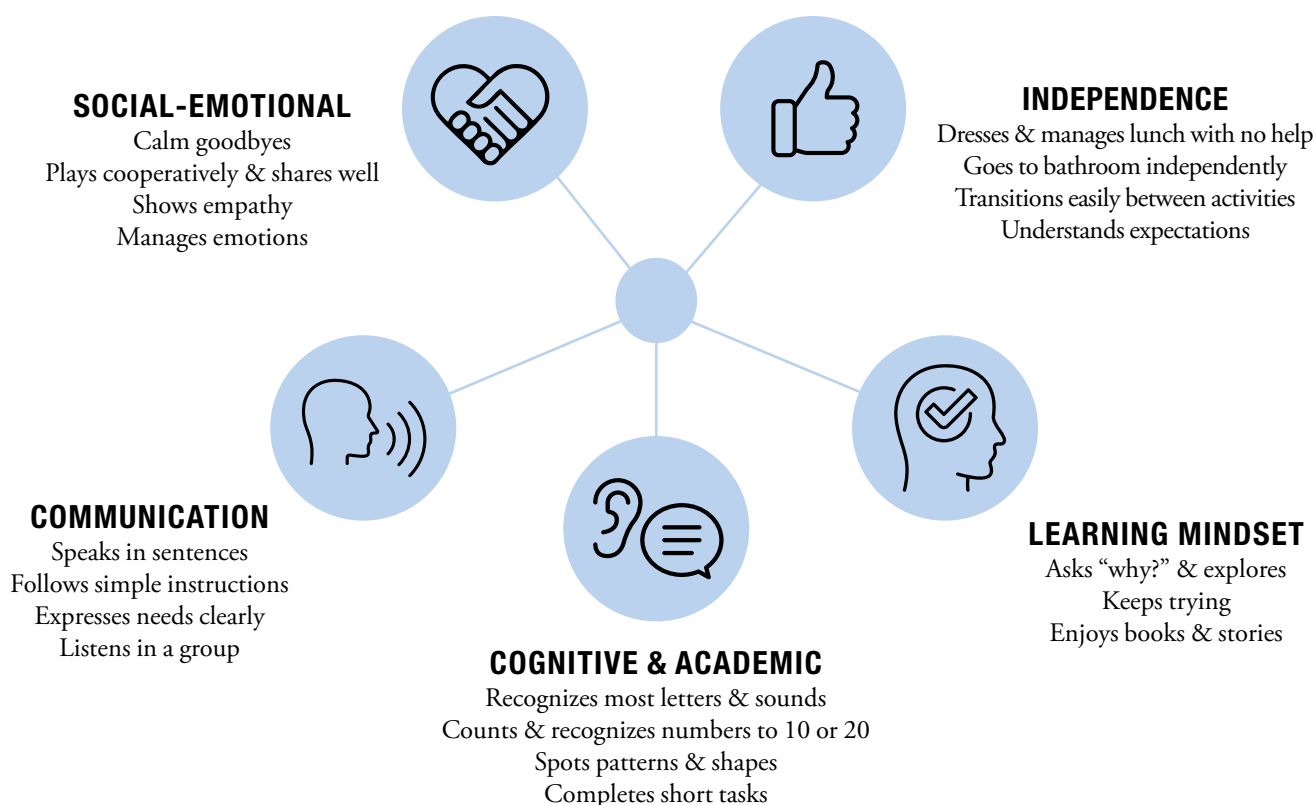


Academic skills develop over time, but what matters most is that children feel safe, curious, and confident as they begin their learning journey. When those foundations are in place, children don't just enter school ready—they step forward with the resilience and joy that fuel lifelong learning.

Justine O'Grady, Director of Curriculum, Maple Bear Global Schools

PRESCHOOL TO ELEMENTARY READINESS MILESTONES

Every child develops at their own pace. These milestones are not strict requirements but common signs that children are building the skills, confidence, and mindset to thrive in elementary school. Some may appear earlier or later, and that's completely normal. Think of this as a guide to the kinds of growth you might notice as your child gets ready for the transition.





CONNECTED CLASSROOMS, GLOBAL CITIZENS

INTRODUCING THE GLOBAL CONNECTIONS PROGRAM

At Maple Bear, we believe that competencies like ecological awareness, empathy, and collaboration are just as vital as literacy and numeracy. Preparing students for the future means helping them understand not only the world's challenges but also their own inner capacities to meet them.

To bring this vision to life, our academic team designed the Global Connections Program (GCP)—an innovative, curriculum-based initiative that integrates the United Nations Sustainable Development Goals (SDGs) with the Inner Development Goals (IDGs).

By linking students from Maple Bear schools across the globe, the program fosters cross-cultural collaboration, inquiry-driven learning, and real-world problem-solving—helping children grow as learners, leaders, and global citizens.



Building Empathy, Leadership and Cultural Competence

The GCP is built on four simple but powerful pillars that guide every collaboration:



Think Global

Students explore worldwide issues, from environmental sustainability to cultural heritage, often framed by the UN's SDGs.



Grow Personally

Through Inner Development Goals, students strengthen critical thinking, collaboration, and leadership.



Act Local

Each global theme is grounded in local action, helping children apply new knowledge to their own communities.



Collaborate Globally

Maple Bear schools in different countries partner directly, enabling students to exchange ideas, share perspectives, and see real impact.

Together, these pillars provide a clear framework for helping students connect global challenges with local action.

What It Looks Like in Action

The Global Connections Program brings real-world issues into the hands of even the youngest students. From protecting pollinators to exploring life under water, Maple Bear children collaborate across borders to understand challenges—and imagine how they can help.

Why Save The Bees?

Junior Kindergarten students from Maple Bear Sinop (Brazil) and Maple Bear Katowice (Poland) teamed up for a three-week project asking, “How can we save the bees?”

Guided by SDG 15 (*Life on Land*) and the IDG *Openness and Learning Mindset*, the children explored why bees matter, what they need to survive, and how humans can help.

Through storytelling, role-play, games, and poster-making, the classes discovered simple actions like planting wildflowers. A highlight was the live “Bee Talk” sessions, where children shared fun bee facts and met their peers from across the globe—making sustainability and global connection both engaging and meaningful.



Protecting Life Below Water

Senior Kindergarten students across Maple Bear schools in Czechia, Poland, and Bulgaria collaborated on projects inspired by SDG 14 (*Life Below Water*) and the IDG of *Empathy and Compassion*.

From exploring how plastic harms sea animals to practicing the 3Rs (reduce, reuse, recycle), each class found hands-on ways to connect big ideas to young learners. Activities included cleaning a make-believe water habitat, experimenting with jars of “polluted” water, and reflecting on emotions connected to caring for the earth.

These shared experiences not only deepened children’s understanding of environmental stewardship but also showed them how empathy and small actions can protect our planet’s oceans and waterways.



Skills That Last a Lifetime

The Global Connections Program is more than a cultural knowledge exchange—it’s a training ground for future-ready skills. Students learn to:

- **Communicate across cultures and languages**, often using English as the common language
- **Lead and collaborate on shared projects**, learning how to organize, listen and contribute to a collective outcome.
- **Develop sustainable mindsets**, by exploring global challenges like clean water and waste reduction - and applying those ideas to their own communities.
- **Solve problems creatively**, working with diverse perspectives to find innovative solutions.
- **Build cultural empathy and awareness** that helps them see issues from multiple sides.



Preparing Students for a Global Future

The Global Connections Program seamlessly extends Maple Bear’s

curriculum and pedagogy through real-world collaboration, cultural exchange, and inquiry-based projects. Students apply what they’ve learned in meaningful ways while remaining grounded in Maple Bear’s proven educational approach.

As Nancy Steinhauer, Global Connections Program Lead, explains:

“Over 50 Maple Bear schools across Brazil, Mexico, Poland, Vietnam, India, and beyond have already joined. Teachers tell us they are inspired by giving their students the chance to identify problems, collaborate on solutions, and take action. Global Connections empowers Maple Bear children to become changemakers and leaders in a world that needs their help—while reinforcing the 21st-century skills of communication, collaboration, creativity, and critical thinking.”



Our preschool students became aware of the importance of protecting nature and were eager to help keep their environment clean and healthy! The project was a huge success - it was relevant, important and motivating! So glad for the opportunity to participate in this project.

Zuzana Veselá, Coordinator,
Maple Bear Olomouc - Czechia.

EXPANDING OPPORTUNITIES FOR MAPLE BEAR HIGH SCHOOL STUDENTS

Maple Bear students now have more ways to earn the Ontario Secondary School Diploma (OSSD). Whether through the flexibility of virtual learning with Maple Bear International School Toronto, the immersive boarding experience at Rosseau Lake College, or a combination of both, families can choose the pathway that best fits their goals.

What is Maple Bear International School Toronto?

Maple Bear high school students now have the opportunity to graduate with two diplomas when they register with Maple Bear International School Toronto. While working toward their local high school diploma, they can also work toward earning the prestigious Ontario Secondary School Diploma (OSSD).

WHY IT MATTERS?

- Global Recognition – Accepted by top universities worldwide
- University-ready curriculum aligned with global standards
- Flexible & self-paced – fits your schedule
- Competitive edge – for scholarships, admissions, and future opportunities

WHAT YOU GET

- Courses taught by Ontario-certified teachers
- Compulsory & elective courses from World History to Biology
- Self-paced, online learning — anywhere, anytime
- Optional one-on-one guidance sessions
- A dual diploma advantage for post-secondary admissions

HOW TO EARN YOUR DUAL DIPLOMA

1. Register online
2. Choose courses
3. Learn asynchronously
4. Meet OSSD requirements
5. Graduate with two diplomas

ONE PROGRAM. TWO DIPLOMAS.

UNLIMITED POSSIBILITIES.



maplebeartoronto.ca

START YOUR JOURNEY TODAY!



Maple Bear International School Toronto



Rosseau Lake College Partnership

Maple Bear Global Schools is proud to announce a new partnership with Rosseau Lake College (RLC), an independent co-ed boarding and day school located in Muskoka, Ontario.

Founded in 1967, RLC offers a uniquely Canadian experience—a close-knit community of 150 Canadian and international students from over 20 countries, a strong academic program, and a stunning lakeside campus surrounded by nature. With an emphasis on outdoor education and personal growth, RLC blends high-quality academics with the Canadian boarding school lifestyle.

WHY THIS PARTNERSHIP MATTERS

This new partnership gives Maple Bear families another pathway to Canadian education. While Maple Bear International School Toronto offers the flexibility of a virtual program, Rosseau Lake College provides a uniquely immersive, in-person experience in Canada.

Students live and learn in a boarding environment surrounded by Muskoka's lakes and forests, where outdoor learning and community life are central to daily school life.

Maple Bear and Rosseau Lake College are united by the same pillars of success: academic excellence, global citizenship, and student development. Both emphasize inquiry-driven, experiential, and student-centred learning—grounded in Canadian pedagogy and enriched by real-world, hands-on experiences. This alignment fosters a partnership designed to broaden our students' horizons.

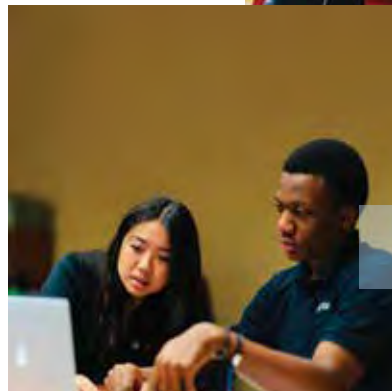
WHAT STUDENTS WILL GAIN:

- Strengthen English fluency through full immersion — in academics, community, and daily life, all while making Canadian friends.
- The Ontario Secondary School Diploma (OSSD) opens doors to top universities worldwide.
- A Canadian boarding school experience in a safe, supportive environment.
- A global peer community with students from 20+ countries.
- Year-round outdoor learning: canoeing, sailing, skiing, and more.

While program details will be shared in the months ahead, this new partnership marks an exciting step forward — broadening the educational possibilities available to Maple Bear students worldwide.



Rosseau Lake College



INSIDE MAPLE BEAR'S EVOLVING CURRICULUM

At Maple Bear Global Schools (MBGS), the curriculum is never static. It is a living, breathing framework—constantly refined to ensure children benefit from the very best practices in education.

The MBGS curriculum is proprietary, outcome-based, and globally benchmarked, built on a proven Canadian pedagogy that has been successful across the world and ensures our students thrive academically, socially, and globally.

Regularly reviewed and updated to reflect the latest developments, it is guided by a Canadian faculty of experienced teachers and administrators who also develop training materials, methodologies, and school policies that keep Maple Bear schools at the forefront of bilingual education.

AN EVOLVING CURRICULUM

The curriculum for Junior Kindergarten through Grade 3 has recently been updated and refreshed. These updates consolidate academic content across regions for greater consistency, strengthen the integration of bilingual immersion across all subjects, and place an even stronger emphasis on

student-centred, inquiry-based learning. The program is balanced and evidence-based, supporting both academic achievement and social-emotional growth.

While the pedagogy remains the same, the curriculum evolves—ensuring schools remain globally aligned, locally adaptable, and equipped to develop the global skills students need for real-world readiness.

BENEFITS ACROSS THE MAPLE BEAR COMMUNITY

For school owners and teachers, the renewed curriculum provides tangible benefits: clearer pathways for teachers, hybrid print and digital resources for flexible delivery, and alignment across international markets. For families, it means assurance that Maple Bear offers not just a strong methodology, but one that is continuously updated to reflect best practice.

This commitment to a strong curriculum is one of Maple Bear's greatest

strengths, reinforcing trust and confidence across our community.

LOOKING AHEAD

The recent updates are part of a methodical, long-term plan. Beginning with JK, SK, and Grades 1 to 3 in English Language Arts, Math, and Science, the next phase will extend into Grades 4 to 8. We are also revising and updating the nursery and toddler programs.

This deliberate cycle of renewal ensures that the Maple Bear program remains consistent, future-focused, and responsive, while never losing sight of the joyful foundations that mark the beginning of a child's educational journey.

The MBGS curriculum is supported by both digital and print components, giving every classroom the tools to deliver meaningful, inquiry-driven learning.



Student Learning Materials

Engaging, Evidence-Based Resources

Our Student Learning Materials are the culmination of Maple Bear's curriculum renewal. Colourful and interactive, they reinforce classroom lessons while sparking curiosity and creativity. Each page is designed to make learning both fun and memorable, supporting academic growth alongside social-emotional development.

Designed for Every Stage

From songs, poems, and games in Junior Kindergarten to detailed, content-rich textbooks in Grades 1 and 2, these materials grow with students. They blend play, inquiry, and skill-building, helping children progress with confidence while discovering the joy of learning.

Highlights by Grade

- JK** Play-based exploration, early numeracy, self-regulation, and social skills.
- SK** Literacy readiness, numeracy patterns, collaborative inquiry, independence.
- Grade 1** Literacy mastery, foundational math, scientific curiosity, cultural awareness.
- Grade 2** Reading fluency, reasoning, project-based science, global awareness.
- Grade 3** Reading comprehension, problem-solving, scientific investigation, community connections



MyMapleBear - Digital Resources that Support Our Curriculum

Learning That Extends Beyond the Classroom

The MyMapleBear digital platform connects school and home through engaging, carefully curated resources. Purposefully designed to reflect our philosophy, it nurtures confident bilingual readers with a rich collection of English books, reading tools, and interactive activities that inspire a lifelong love of learning.

Built on Canadian Excellence

Created with the same care as Maple Bear's proprietary curriculum, MyMapleBear offers a trusted, safe digital environment where children learn through play, inquiry, and discovery. Interactive games, videos, and apps support global standards while fostering digital literacy and real-world skills.

Key Features of MyMapleBear

- Digital libraries from Scholastic
- Online reference tools from Britannica
- Interactive storybooks, math games, and science videos

Curiosity Meets Technology

By extending classroom learning into the home, MyMapleBear supports teachers, empowers parents, and nurtures confident, curious learners.



QUALITY THAT BUILDS STRONG SCHOOLS AND BRIGHT FUTURES

Academic Quality Assurance: Elevating Standards in Learning

Since its earliest days, Maple Bear has relied on a rigorous academic quality assurance process to guide teaching, assessment, and leadership—helping our schools uphold the highest standards worldwide. At its core, MBQA is about putting students first: fostering consistency, accountability, and continuous improvement so every child has the best chance to succeed.

Each year, schools take part in a structured evaluation, working in partnership with our Quality Assurance Reviewers. Together, they examine four key domains: program implementation, leadership, instruction, and assessment. The process begins with self-assessment, followed by an in-depth review by Maple Bear's QA team, and results in a School Improvement Plan with clear goals and action steps. This cycle of reflection and planning ensures that schools not only meet Maple Bear's standards but also evolve year after year.

In 2025, Maple Bear added a new dimension to this process with the introduction of official certification. Schools that complete the QA review are now formally recognized for their pursuit of excellence, giving parents visible assurance that rigorous standards are being upheld and providing school owners with a powerful tool to demonstrate quality and accountability.

For more than 20 years, Maple Bear's Academic Quality Assurance (MBQA) framework has been central to how we uphold high standards of teaching and learning across our school network. In 2025, we deepened this commitment by launching the Global Excellence (GLEX) Program, designed to bring the same level of rigour to school operations, facilities, and administration.

These frameworks provide clarity, consistency, and confidence to families, educators, and school owners alike. They build on Maple Bear's Canadian roots while reinforcing its reputation as a trusted global leader in bilingual education.



At Maple Bear, quality assurance is not just a process—it's a promise. It ensures that every student, in every classroom, receives the global standards of excellence we stand for, while honouring the local context that makes each school unique.

Martine Lewis,
Chief Academic Officer



GLEX: Raising the Operational Bar

If MBQA safeguards the classroom experience, the Maple Bear Global Excellence (GLEX) Program ensures that every aspect of school operations meets the same uncompromising standards.

Launched in February 2025, GLEX is Maple Bear's operational quality assurance framework, created to uphold consistency, efficiency, and excellence across our global network. The program addresses everything from legal compliance and administrative practices to facilities, health, and safety—ensuring schools are well-run, sustainable, and aligned with global benchmarks. Assessments are carried out on a digital platform that monitors progress and supports schools with tailored action plans for improvement.

The benefits are far-reaching: school owners receive structured guidance and best-practice implementation, parents gain confidence in safe and well-maintained facilities, and Maple Bear schools worldwide deliver a uniform, trusted experience.

With GLEX, we are raising the operational bar across the globe. Families and school owners can trust that every Maple Bear school reflects not only academic excellence, but also world-class management and care.

Sunil Sudhakar,
Chief Operations Officer
Maple Bear Global Schools

Quality Without Compromise

Our school communities benefit from inspired teaching, safe and well-managed facilities, consistent standards worldwide, and a shared culture of continuous improvement.

Together, MBQA and GLEX provide the unified framework that makes this possible, strengthening both the academic and operational pillars of Maple Bear. This dual focus reflects Maple Bear's dedication to delivering consistent quality and continuous improvement across its global network.

By embedding quality at every level, Maple Bear is not only preparing students for success today — it is also building the foundation for thriving and resilient school communities tomorrow.



FROM **FIRST** STEPS TO **FUTURE** PATHS

Inside Maple Bear's Core Programs

Education is more than a series of grades, levels and classes. It's a journey of discovery, confidence and growth. At Maple Bear, we guide children along this path through four core programs: Bear Care, Preschool, Elementary, and High School. Each stage has its unique focus, but together they form a seamless pathway that equips students with the academic excellence, bilingual fluency, and future-ready skills they need to thrive in today's interconnected world.

While program names and age ranges may vary from region to region, every Maple Bear school delivers the same Canadian education philosophy and quality standards from early childhood through high school.

For families, this means continuity and trust. For school owners and investors, it represents a proven model that supports strong enrollment, retention, and community impact.



Bear Care: First Steps

In Bear Care, infants and toddlers (6 weeks - 24 months) begin their learning journey in a safe, nurturing environment where care and connection are at the centre. Through play-based activities, children are gently introduced to bilingual immersion, absorbing sounds, rhythms, and words from an early age.

The program not only reassures parents during a child's earliest years but also establishes Maple Bear as a trusted partner in their family's educational journey — a relationship that often extends well beyond the toddler years.



Preschool: Curiosity in Action

For children ages 3 to 5 years, preschool is often their first structured learning experience outside the home — and Maple Bear ensures it's playful and engaging.

Our Canadian-designed curriculum emphasizes inquiry-based learning, encouraging children to be curious, explore, and express themselves. At the same time, social-emotional growth takes centre stage as children learn to share, collaborate, and build friendships.

Because of its popularity and growth worldwide, preschool is the flagship program and often serves as the gateway to Maple Bear. Many families discover the brand at this stage, making it both a high-demand program and a natural entry point. It also lays the foundation for a smooth transition into Kindergarten, where bilingual education begins in earnest through natural language absorption in a play-based, low-pressure environment. The Kindergarten program emphasizes thematic, developmentally appropriate learning and dedicated exploration time — a holistic experience built on the trusted Canadian approach to education.



Elementary: Building Strong Foundations

Elementary school (6 to 12 years) is about building strong academic foundations and preparing students for their eventual transition into high school. At Maple Bear, students learn through bilingual immersion, gaining fluency in two languages while developing solid skills in literacy, numeracy, and scientific inquiry. Alongside these core subjects, we foster critical thinking, creativity, and problem-solving, ensuring students are confident and ready to take on the challenges of secondary school.

Families remain with Maple Bear because the elementary years demonstrate the value of our approach: a rigorous academic program, a bilingual advantage, and the development of future-ready skills that set children apart as they enter high school.



High School: Ready for Tomorrow

Maple Bear's High School program (13 to 17 years) provides students with a truly international experience. Alongside locally required subjects taught in the local language, students take Maple Bear credit courses designed by Canadian curriculum experts and delivered in English.

What truly sets Maple Bear's High School program apart is the opportunity it gives students to graduate with dual credentials recognized around the world.

Through Maple Bear International School Toronto, students can pursue accreditation from the Province of Ontario, graduating with both their local credential and the Ontario Secondary School Diploma (OSSD). This distinction carries weight worldwide, as Canada consistently ranks among the top-performing countries in the OECD's Programme for International Student Assessment (PISA).

For our families, this dual diploma opens doors to universities around the world. In addition to rigorous academics, students gain the independence, confidence, and leadership skills needed for life after graduation.



LIFELONG LEARNING BEGINS HERE

Maple Bear schools are more than classrooms — they are communities where children grow, families feel supported, and learning thrives. By offering a complete pathway from early childhood to high school, Maple Bear provides consistency families can rely on and a model that empowers our partners and school owners to make a lasting impact. Together, we are shaping global citizens prepared for tomorrow.

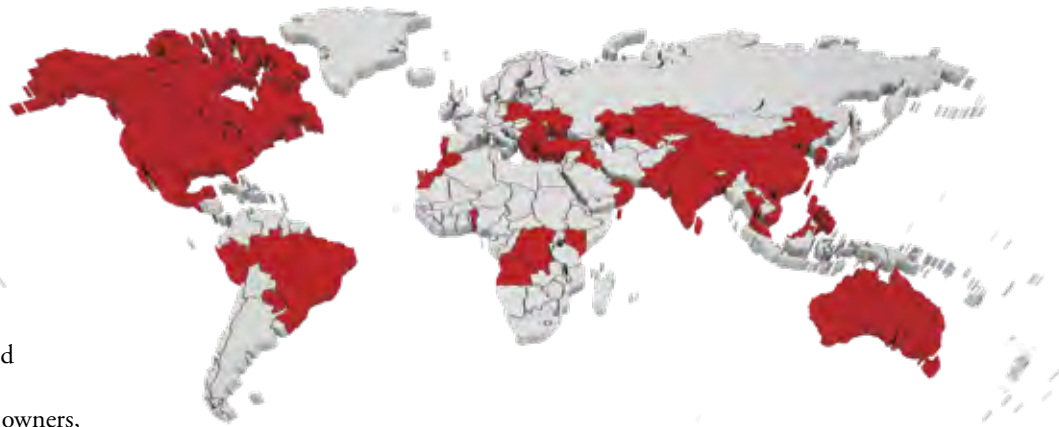


THE MAPLE BEAR DIFFERENCE

A Global Franchise Opportunity with Impact

In an increasingly competitive education market, Maple Bear Global Schools stands apart — not just as a school system, but as a thriving global community dedicated to delivering world-class, bilingual education to tens of thousands of students around the world.

For prospective investors and school owners, the Maple Bear franchise model offers a rare combination: the proven success of a Canadian education system, the flexibility to adapt to local markets, and the strength of a brand that is already making a meaningful impact in over 35 countries.



A Global Brand with Local Relevance

With more than 69,000 students across hundreds of schools worldwide, Maple Bear has established itself as one of the fastest-growing international education brands. While our schools share a unified commitment to the Canadian education philosophy — rooted in academic excellence, bilingual immersion, and student-centred learning — each location is thoughtfully adapted to reflect the local culture and community it serves.

This unique combination of global expertise and local customization allows Maple Bear partners to meet the needs of their market without compromising the brand's rigorous quality standards.



Trends Fuelling the Maple Bear Opportunity

Across the globe, parents are prioritizing multilingual competence as a pathway to academic success, cultural awareness, and global opportunity. They want schools that prepare their children not only to communicate in more than one language, but to thrive in an interconnected world.

At the same time, rising global wealth and growing dissatisfaction with public systems are driving families toward premium private education, where they seek schools that reflect their aspirations for quality, innovation, and high global standards.

Families are also placing greater emphasis on early childhood education, investing earlier to give their children the strongest possible foundation for lifelong learning.

Maple Bear is uniquely positioned to respond to all of these shifts. With a globally trusted model that combines Canadian pedagogy, bilingual immersion, and a seamless pathway from early childhood through high school, Maple Bear offers families the quality and consistency they are seeking — and provides partners with a proven opportunity for growth.

Proven Pedagogy, Trusted Worldwide

At the heart of Maple Bear's success is the Canadian education system — consistently ranked among the top 10 participating OECD countries in the Programme for International Student

Assessment (PISA).

Known for its strong student outcomes, inclusivity, and emphasis on developing critical thinking skills, the Canadian approach is trusted worldwide. Our curriculum is designed to prepare students for success — not only academically, but as curious, adaptable, and globally minded citizens.

All Maple Bear schools benefit from our comprehensive academic support, including:

- **Bilingual immersion programs** starting in early childhood.
- **Hands-on, inquiry-based learning** that encourages creativity, problem-solving and future-ready skills.
- **Proprietary curriculum** to ensure quality and consistency across all locations.
- **Ongoing teacher training** led by Canadian education experts.
- **Quality assurance reviews** to maintain excellence in every classroom.

A Partnership Model that Sets Our Schools Up for Success

From the moment a new franchise joins our network, Maple Bear provides hands-on support to guide every step of the journey:

- **Turnkey operational guidance** — from site selection and design to staffing and marketing.



- **Extensive training** for teachers, principals, and administrative teams.
- **Brand strength** backed by global marketing, communications, and a reputation for excellence.

This partnership approach ensures that even first-time education entrepreneurs can confidently launch and grow a thriving school.

Joining a Community of Changemakers

Becoming a Maple Bear franchisee means more than opening a school — it means joining a movement that is transforming education and enriching communities worldwide. Our partners are entrepreneurs, educators, and visionaries who share a common goal: to create lasting impact through learning.

Whether you are looking to establish your first school or expand an existing network, Maple Bear offers the expertise, resources, and inspiration to make your vision a reality.

Why Maple Bear?



A Truly Global Network

- 35+ countries
- 69,000+ students
- Hundreds of schools — and growing



Partner-Focused Support

- Turnkey operational guidance
- Robust marketing & brand recognition
- Quality assurance built into every stage



World-Class Education

- Canadian education ranked among the best in the world
- Bilingual immersion from early years
- Ongoing teacher training by Canadian experts



Proven Growth Model

- Adaptable to local market needs
- Success in diverse economic and cultural contexts

EMPOWERING EDUCATORS EVERYWHERE

At Maple Bear Global Schools, we encourage our regions to take the lead in creating opportunities for schools to network, upgrade knowledge and skills, and inspire one another to reach new heights in education. These events became opportunities to celebrate achievements, exchange ideas, and look ahead to the future of Maple Bear education.



EMPOWERING MINDS, TRANSFORMING FUTURES April 2025 - Sofia, Bulgaria

The first Maple Bear Central & Eastern Europe Academic Convention in Sofia, Bulgaria, was an inspiring two-day event that united educators and leaders from 12 countries. Participants explored the future of bilingual education, embraced emerging edtech, and built strong connections across the region—setting the stage for continued growth and collaboration.

THE MAPLE BEAR FACTOR May 2025 - Foz do Iguaçu, Brazil

The 17th Maple Bear Brazil Annual Convention brought together more than 450 participants and 160 schools for four dynamic days of learning, collaboration, and strategic direction. With a theme of Maple Bear Factor, the event celebrated what makes our network unique: an education that goes beyond bilingualism—anchored in purpose, affection, and a global vision. Inspiring talks, academic reflections, and operational best practices reinforced the values of collaboration, excellence, and innovation that drive Maple Bear forward.



GLOBAL SKILLS FOR A CHANGING WORLD August 2025 - Singapore

Held in Singapore, the Maple Bear Asia Education Conference 2025 focused on equipping educators with the tools to nurture essential global skills such as creativity, collaboration, and compassion. From keynote speakers and school tours to community initiatives like the Terry Fox Walkathon, the event celebrated both professional learning and Maple Bear's commitment to making a difference beyond the classroom.

2025 Summer Camp in Canada

In July 2025, Maple Bear students from all over Brazil gathered in Toronto for two weeks of discovery, leadership, and cultural immersion. From university visits to leadership classes, from Canada Day celebrations to Niagara Falls adventures, the 2025 Summer Camp offered these high school students an unforgettable glimpse into Canadian life and learning.



LEADERSHIP PROGRAM

Teamwork and communication in action during the leadership sessions.



UNIVERSITY LIFE

A glimpse into the future: touring the University of Toronto and Brock University campuses.



FRIENDSHIP AND FUN!

Two weeks of memories that will last a lifetime!



CANADIAN TOURIST ADVENTURES

Unforgettable moments at Niagara Falls and Canada Day fireworks.



Partner with Us to Create Your Own Camp!

Every Maple Bear community is unique—and so are our students. That's why Maple Bear Global Schools offers the option to design custom camps, built around the needs of your school.

Your camp can include visits to high-calibre Canadian universities, immersive English language experiences, and tours of Canada's most iconic attractions—all while giving

students the chance to live and learn in Canada.

From leadership training to cultural exploration, we'll help you plan the very best Canadian experience for your students.

Contact us to explore what your own Maple Bear Camp could look like at info@maplebearglobal.ca.



MapleBear



The best of Canadian education for a global future.